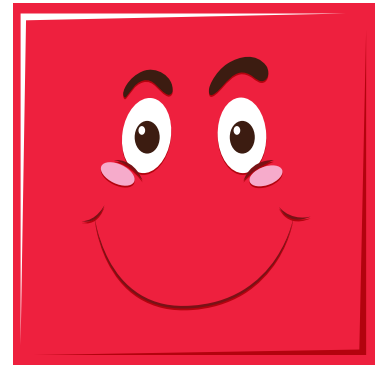




I'm a round shape with
no start or end points.

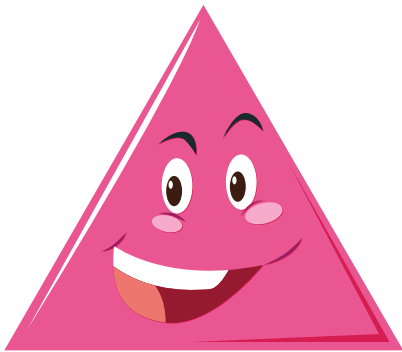
What shape am I?

Circle



What shape has 4 equal
straight sides and
4 right angles?

Square



I'm a shape that looks
like an arrowhead, with
a point on one end.

My sides are straight
and meet together.

Triangle

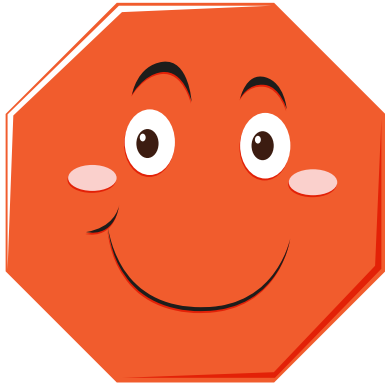


I have 4 corners

I have 4 sides

I have 2 long sides
and 2 short sides

Rectangle



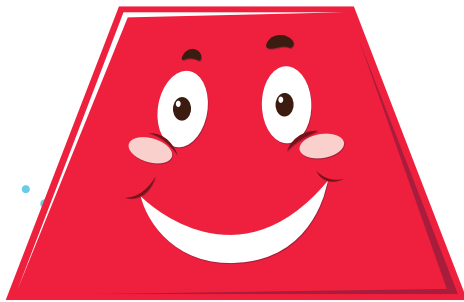
I have 8 straight,
equal sides. My shape is
an octagon. What am I?

Octagon



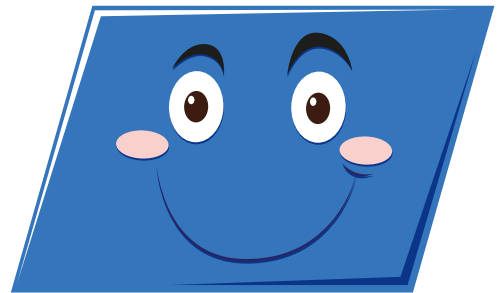
I have 6 straight sides
all the same length.
Hexagon is my name.
What shape am I?

Hexagon



I have 4 side
I have 1 pair of
parallel sides
Who am I?

Trapezium



I have 4 straight sides
where the top and
bottom sides are parallel.
What shape am I?

Parallelogram



I'm a C curved shape
like the moon.

What shape am I?

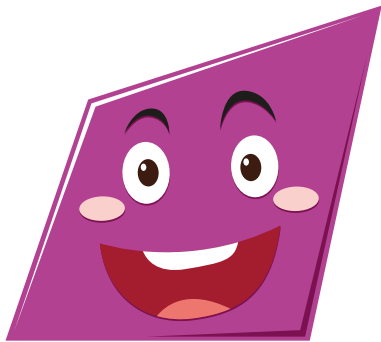
Crescent



I have 4 equal
straight sides but
my angles are tilted.

What shape am I?

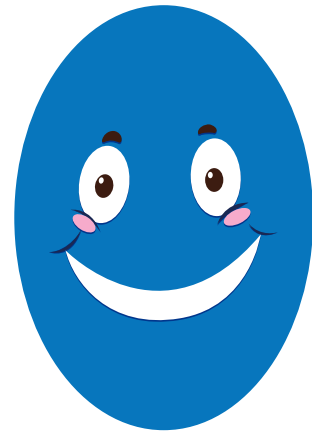
Rhombus



I have 4 sides with
a pair of parallel sides.

My shape looks like a
slanted rectangle.

Trapezoid



I look like a stretched
out circle. I'm like an oval.

What shape am I?

Oval